

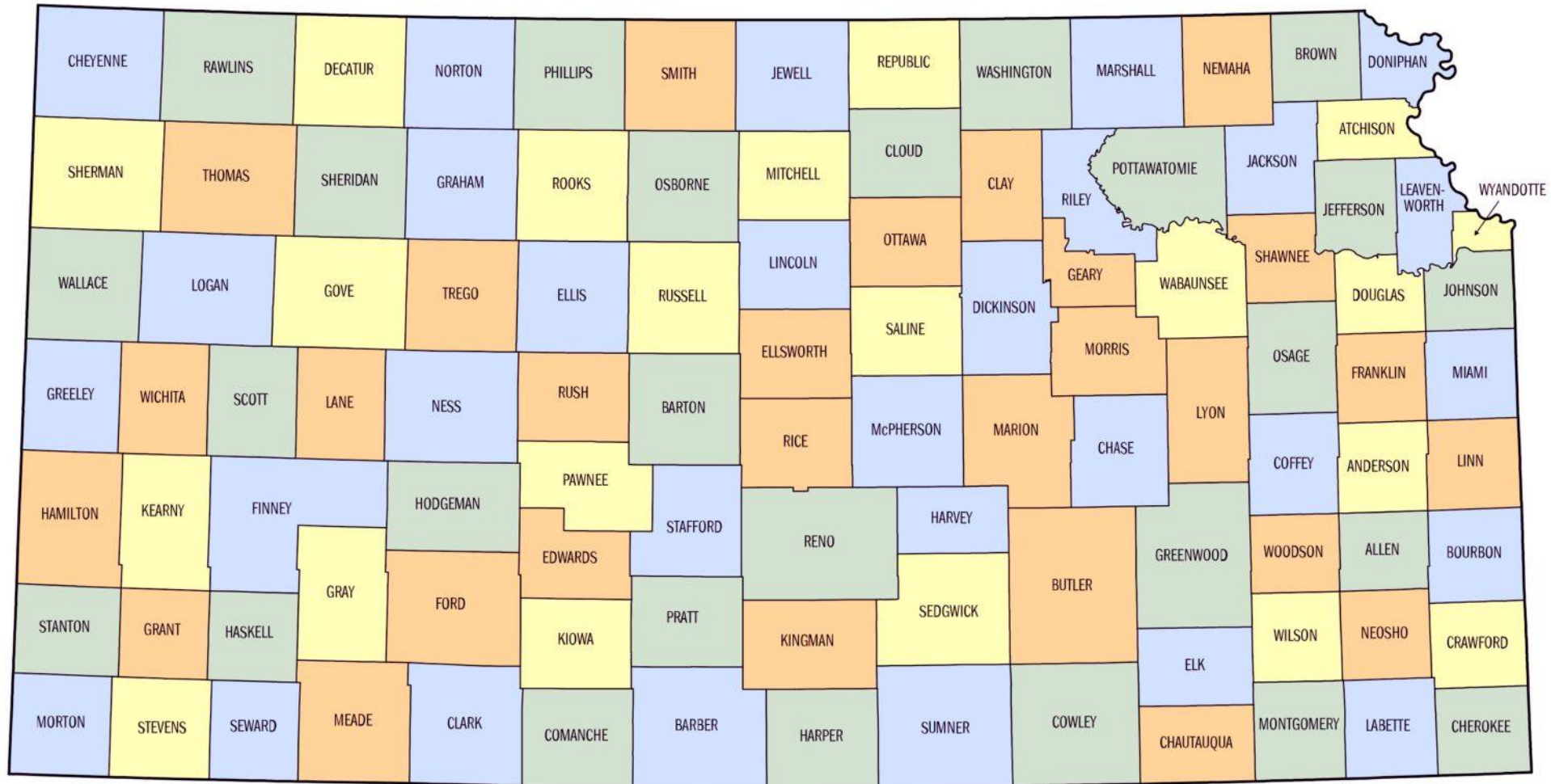
Voter Education Kansas

American Muslim Coalition of Kansas City

www.amckc.org



Kansas

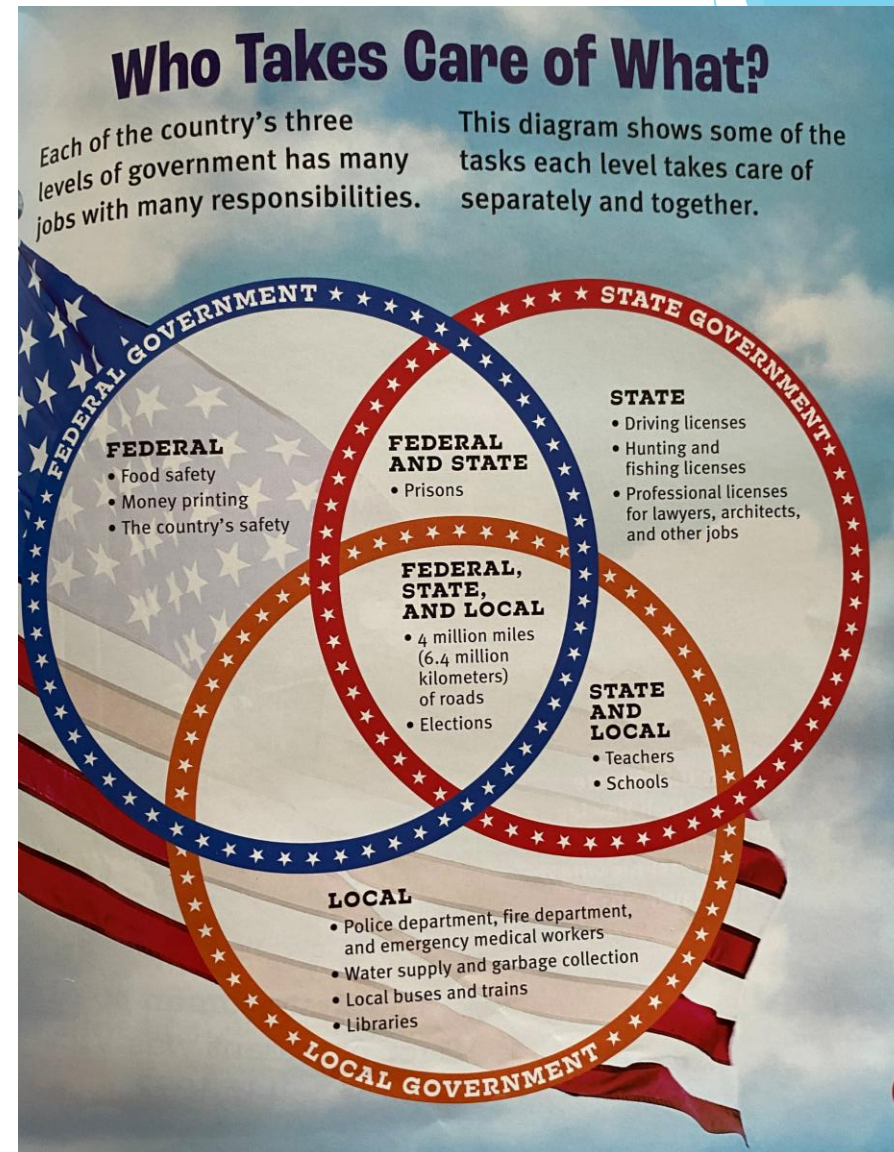


copyright©theprintablemaps.com



WHY VOTE?

Your VOTE is very important for you, your family, your community and the country we live in



WHY YOUR VOTE MATTERS ?

BECAUSE IT COUNTS AND INFLUENCES:

- Policies and procedures that affect educational, healthcare, social, law enforcement, legal, safety and security and cost of living, and the *environment* where you, your family and members of our community live
- Taxes *you* pay to execute those policies and procedures by the City, County, State, and Federal Government
- The persons who hold law-making and administrative responsibilities to make and execute those policies and procedures and spend the taxes you pay

SO VOTE !



Your Voice Matters

ENGAGING IN THE DEMOCRATIC PROCESS

Electing Representatives

By voting, you have the power to choose leaders who align with your values and priorities, ensuring that your interests are represented in local, state, and national government.

Shaping Policies

Your vote influences crucial policies that affect education, healthcare, and the environment, allowing you to advocate for changes that benefit your community and future generations.

Community Engagement

Participating in elections encourages active community involvement, fostering a culture where citizens are informed, engaged, and working together to create a better society for everyone.

Community Power Increases



Why Local Elections Matter

Local elections affect your daily life more directly than most people realize:

- **Schools & youth programs**
- **Public safety**
- **Housing & rent**
- **Zoning, development, housing programs, and local planning**
- **Roads, buses, and streets**



Why Local Elections Matter (2)


Elected persons who hold public offices in state, and local governments are the ones who decide:

- ▶ How much you should pay for your car registration and taxes?
- ▶ What should be a fair rate for insuring your home?
- ▶ What textbooks should be used in the school?

Voting in local elections is a powerful way to help shape the community where you live, work, raise children, and build your future

Your vote has more power in local elections — a small number of votes can make a big difference.

Sample Ballot

A	B	C
Precinct 59 Split 2	State of Kansas	Douglas County
<p>Instructions to Voter</p> <p>Notice: If you tear, deface or make a mistake and wrongfully mark any ballot, you must return it to the election board and receive a new ballot or set of ballots.</p> <p>To vote for a person (except for presidential electors) darken the oval at the left of the person's name. To vote for a person whose name is not printed on the ballot, write the person's name in the blank space and darken the oval to the left.</p> <p>To vote for presidential electors for candidates for president and vice-president darken the oval to the left of the names of the candidates. To vote for presidential electors to be selected by candidates for president and vice-president whose names are not printed on the ballot, write the persons' names in the appropriate blank spaces and darken the oval at the left of the names of the candidates.</p>		
<p>Read Both Sides of Ballot</p> <p>To vote you must darken the oval completely</p> 		
STATE OFFICES		COUNTY OFFICES
<p>STATE SENATOR 19th DISTRICT Vote for One</p> <p><input type="radio"/> Anthony Hensley Topeka Democratic</p> <p><input type="radio"/> Shari Weber Vassar Republican</p> <p><input type="radio"/> Write-in</p>		<p>COUNTY CLERK Vote for One</p> <p><input type="radio"/> Jameson (Jamie) Shew Lawrence Democratic</p> <p><input type="radio"/> Write-in</p>
NATIONAL OFFICES		COUNTY TREASURER
<p>for PRESIDENTIAL ELECTORS FOR PRESIDENT AND VICE-PRESIDENT Vote for One Set of Electors</p> <p><input type="radio"/> Barr and Root Libertarian</p> <p><input type="radio"/> McCain and Palin Republican</p> <p><input type="radio"/> Nader and Gonzalez Independent</p> <p><input type="radio"/> Obama and Biden Democratic</p> <p><input type="radio"/> Baldwin and Castle Reform</p> <p><input type="radio"/> Write-in</p>		<p>Vote for One</p> <p><input type="radio"/> Paula Gilchrist Lawrence Democratic</p> <p><input type="radio"/> Write-in</p>
<p>STATE REPRESENTATIVE 53rd DISTRICT Vote for One</p> <p><input type="radio"/> Cecil T. Washington, Jr. Topeka Republican</p> <p><input type="radio"/> Ann E. Mah Topeka Democratic</p> <p><input type="radio"/> Write-in</p>		REGISTER OF DEEDS
<p>UNITED STATES SENATOR Vote for One</p> <p><input type="radio"/> Joseph L. Martin St. Marys Reform</p> <p><input type="radio"/> Pat Roberts Dodge City Republican</p> <p><input type="radio"/> Jim Slattery Topeka Democratic</p> <p><input type="radio"/> Randall L. Hodgkinson Topeka Libertarian</p> <p><input type="radio"/> Write-in</p>		<p>Vote for One</p> <p><input type="radio"/> Kay Pesnell Eudora Democratic</p> <p><input type="radio"/> Write-in</p>
<p>STATE BOARD OF EDUCATION MEMBER 4th DISTRICT Vote for One</p> <p><input type="radio"/> Robert Meissner Topeka Republican</p> <p><input type="radio"/> Carolyn L. Campbell Topeka Democratic</p> <p><input type="radio"/> Write-in</p>		SHERIFF
<p>UNITED STATES REPRESENTATIVE 2nd DISTRICT Vote for One</p> <p><input type="radio"/> Robert Garrard Edgerton Libertarian</p> <p><input type="radio"/> Leslie S. Martin St. Marys Reform</p> <p><input type="radio"/> Nancy E. Boyda Topeka Democratic</p> <p><input type="radio"/> Lynn Jenkins Topeka Republican</p> <p><input type="radio"/> Write-in</p>		<p>Vote for One</p> <p><input type="radio"/> Kenneth McGovern Lawrence Republican</p> <p><input type="radio"/> Write-in</p>
COUNTY OFFICES		TOWNSHIP OFFICES
<p>COUNTY COMMISSIONER 3rd DISTRICT Vote for One</p> <p><input type="radio"/> James E. Flory Lawrence Republican</p> <p><input type="radio"/> Ken Grotewiel Lawrence Democratic</p> <p><input type="radio"/> Write-in</p>		<p>TOWNSHIP TRUSTEE MARION Vote for One</p> <p><input type="radio"/> Bonnie Wiscombe Overbrook Democratic</p> <p><input type="radio"/> Mike Fawl Overbrook Republican</p> <p><input type="radio"/> Write-in</p>
<p>TOWNSHIP TRUSTEE MARION Vote for One</p> <p><input type="radio"/> Jim Jolly Overbrook Democratic</p> <p><input type="radio"/> Write-in</p>		
Precinct 59 Split 2	Typ:01 Seq:0059 Spl:02	

Why Local Elections Matter (3)



**COUNTY
EXECUTIVE
(COUNTY
MAYOR)**



CITY MAYOR



**SCHOOL BOARD
SUPERINTENDENT**

Executive Branch

**PRESIDENT OF THE
UNITED STATES**

**VICE PRESIDENT OF
THE UNITED STATES**

PRESIDENT'S CABINET

THE EXECUTIVE BRANCH
ALSO INCLUDES
EXECUTIVE DEPARTMENTS,
INDEPENDENT AGENCIES,
AND OTHER BOARDS,
COMMISSIONS, AND
COMMITTEES.

CARRIES OUT LAWS



Why Local Elections Matter (4)

City Council Members

County Commissioners

School Board Members

Legislative Branch

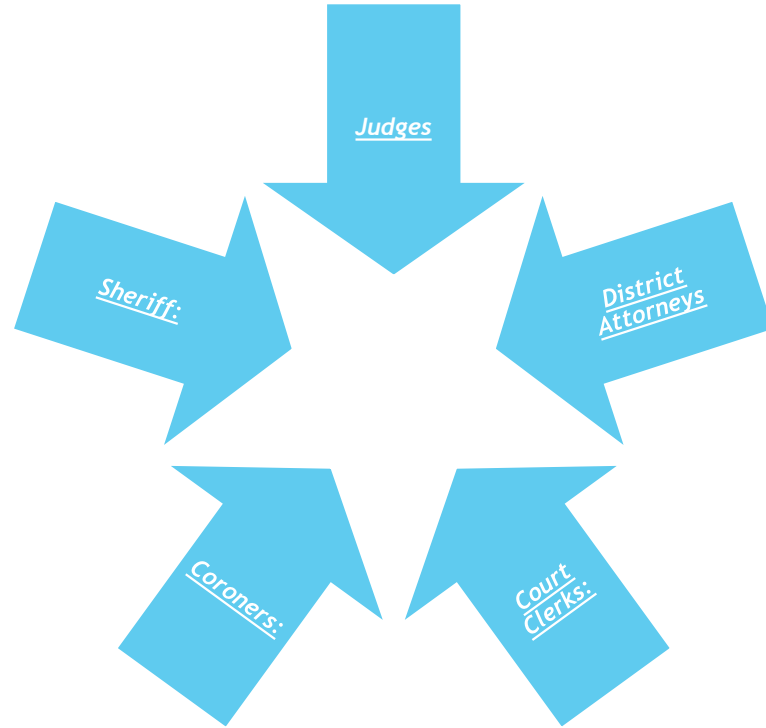
CITY COUNCIL /
TOWN COUNCIL /
COUNTY COUNCIL OR
BOARD OF
COMMISSIONERS

ELECTED BY DISTRICT OR
AT-LARGE. PASS
ORDINANCES (LOCAL
LAWS), ADOPT BUDGETS,
SET POLICY DIRECTION
REPRESENT COMMUNITY
INTERESTS AND HOLD
PUBLIC HEARINGS

MAKES LOCAL LAWS



Why Local Elections Matter (5)



Judicial Branch

MUNICIPAL COURTS
(IN CITIES AND TOWNS)

DISTRICT COURTS

SUPERIOR COURTS

INTERPRETS LOCAL LAWS & HANDLES VIOLATIONS

EVALUATES LAWS



Why Local Elections Matter (6)

Administrative

Treasurer

Comptroller

City and County Clerks

Supervisor of Elections



MUSLIM VOTE MATTERS

- Getting out to vote is essential – “if you do not care for politics the politicians are not going to care for you”.

This mindset has hurt us in the past; we cannot remain inactive anymore.

- Voting at all levels of government is important – federal, state, county, city, and local.
- Electing **Muslim candidates** to public offices will benefit you, your children, and Muslim community.

Muslims
Vote



The Mosque
as a hub for
civic
engagement

Prophet Muhammad ﷺ and Civic Responsibility

- The Prophet Muhammad ﷺ was not only a spiritual leader — he also helped build a just and organized community in Madinah.
- He participated in community agreements, protected rights, and encouraged in consultation, fairness, and responsibility.
- His example shows that being engaged in community affairs is part of caring for people and upholding justice.



The Mosque as a Hub for Civic Engagement (2)

Shura (Consultation)

Leadership in Islam is based on mutual consultation. “And whose affairs are [determined by] consultation among themselves” (Quran 42:38)

Amana (Sacred Trust)

Obtain a mail-in registration form from your local election office or download it online, fill it out, and return it by mail to ensure your registration is processed.

Shahadah (Witnessing)

Choosing a leader is a form of giving testimony. To abstain is to withhold a testimony for the good of the community.



The Mosque as a Hub for Civic Engagement (3)



The Minbar (The Pulpit)

Using Friday Khutbahs to educate the Ummah on the importance of social justice and being heard in the "public square."



Neutral Education

Hosting "Candidate Forums" where the community can vet leaders based on values like compassion, integrity, and equity.



Voter Mobilization

Serving as a physical site for voter registration drives and "Souls to the Polls" style coordination.



The Mosque as a Hub for Civic Engagement (4)

Action	Allowed?	Condition
Voter Registration	✓ Yes	Must be nonpartisan.
Candidate Speaking	✓ Yes	Must invite all viable candidates.
Donating to Campaign	✗ No	Strictly prohibited.
Endorsing from Pulpit	✗ No	Strictly prohibited.
Discussing Issues	✓ Yes	Can discuss "the Muslim perspective" on policy.
Renting Space	✓ Yes	Must charge Fair Market Value to all candidates.



The Mosque as a Hub for Civic Engagement (4)

Key Objectives

Empowering the Marginalized

Ensuring the Muslim voice is represented in policies affecting civil rights and religious freedom.

1

Promoting *Maslah* (Public Interest)

Voting for candidates who prioritize the well-being of the entire society, not just a specific group.

2

Commanding Good (*Amr bil-Ma'ruf*)

Using the vote as a tool to enjoin what is right and forbid what is wrong in the legislative branch.

3



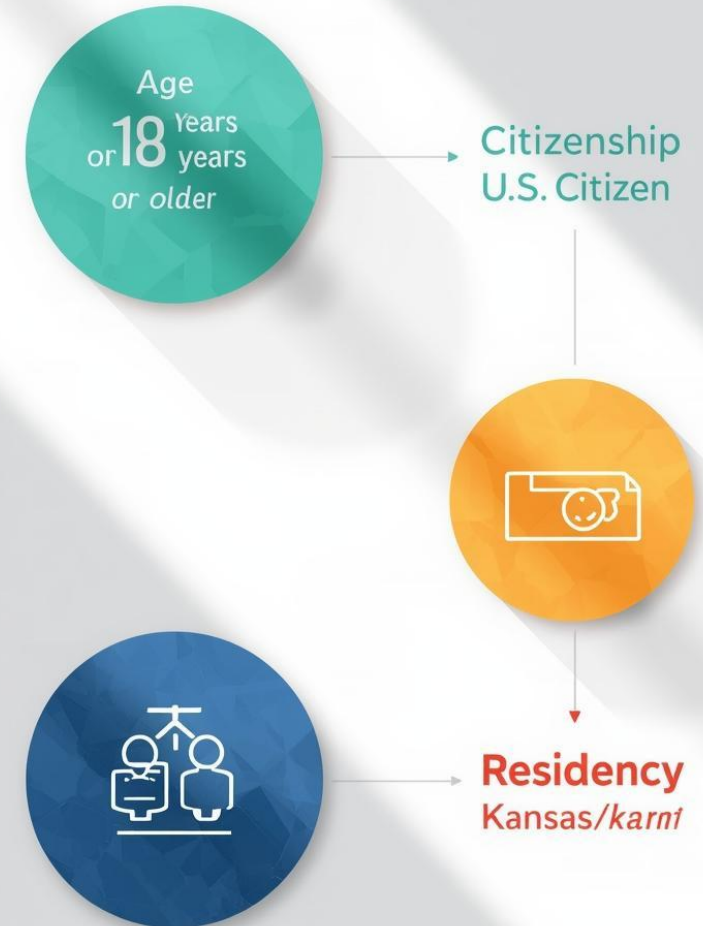
Voting Registration



Kansas Voter Eligibility

To vote in Kansas, you must meet specific eligibility requirements that include age, citizenship, and residency. Understanding these criteria ensures all eligible citizens can participate in the electoral process.

Eligibility Requirements to Vote in Kansas



Registration Requirements

Valid ID

A government-issued photo ID is necessary.

Online Option

Register conveniently through the official portal.

Proof of Residency

Show documentation confirming your Kansas address.

In-Person Registration

Visit your local election office to register.



Easy Registration

SIMPLE WAYS TO REGISTER TO VOTE

Online Portal

You can register quickly and conveniently through the **Kansas online portal**, which allows you to complete your registration in just a few minutes from anywhere.

Mail-in Form

Obtain a mail-in registration form from your local election office or download it online, fill it out, and return it by mail to ensure your registration is processed.

Local Election Office

Visit your **local election office** for in-person assistance with the registration process, where staff can guide you and answer any questions about the voting process.



Confirm Your Registration

Check

1

Visit the Kansas Secretary of State website to **verify your registration status** conveniently in just a few clicks.

2

Call

Reach out to your County Election Office directly to **ensure your registration details** are accurate and up to date.



When to Vote?



Kansas Voting Methods

IN-PERSON VOTING

In-person voting allows registered voters to cast their ballots at designated polling locations on Election Day, ensuring access to the electoral process and immediate assistance if needed.

ABSENTEE VOTING

Absentee voting enables registered voters who cannot attend polling places to request a mail ballot, ensuring their participation in the election from any location before the deadline.



EARLY/ADVANCE VOTING

Advance voting permits voters to cast their ballots before Election Day at specified locations, providing flexibility to accommodate varying schedules and ensuring a smooth voting experience.

PROVISIONAL BALLOTS

Provisional ballots are used when a voter's eligibility is uncertain. They allow individuals to vote while verifying their registration status after Election Day to ensure every voice is heard.

Early Voting Options

1. Advance voting locations are available across Kansas, typically at designated polling places
2. Check local election offices for specific hours and locations for each election cycle.

Flexible Schedules

Choose times that best fit your routine.

Vote at Your Convenience

Cast your ballot when it suits you best.

Avoid Lines

Vote at off-peak times for short waits.

Secure Process

Ensure your vote is safe and protected.



In-Person Voting

On Election Day, voters can visit designated polling places throughout Kansas to cast their ballots. It's essential to know your polling location and its operating hours.



Find Your Polling Place

Locate your designated area to vote easily.

Verify Your Registration

Ensure your registration is active before voting.



Important Information for In-Person Voting



Find Your Polling Place

Locate your designated area to vote easily.



Verify Your Registration

Ensure your registration is active before voting.



Absentee Voting

Absentee voting by mail allows Kansans to cast their ballots conveniently when unable to vote in person, ensuring everyone's voice is heard in the election process.



Steps for Successful Absentee Voting



Request a Ballot

Make sure to request your ballot on time.



Fill Out and Mail

Carefully complete your ballot before mailing it.



Track Your Ballot

Keep an eye on your ballot's journey.



Deadlines Matter

Always be aware of submission deadlines.



Signature Verification

Ensure your signature matches for validation.



Verify Your Signature

Check that your signature is consistent and clear.



Key Dates for Voting

Primary Elections

Primary elections determine party nominees for office.

General Elections

General elections decide winners for various offices.

Local Elections

Local elections focus on community-specific issues and representatives.



Where to Vote ?



Polling Place Locations in Kansas



County Election Office

Find your local election office for assistance.



Community Centers

Many centers serve as convenient voting locations.



Essential Items for Voting Day



Photo ID

Bring a government-issued ID for verification.



Registration Card

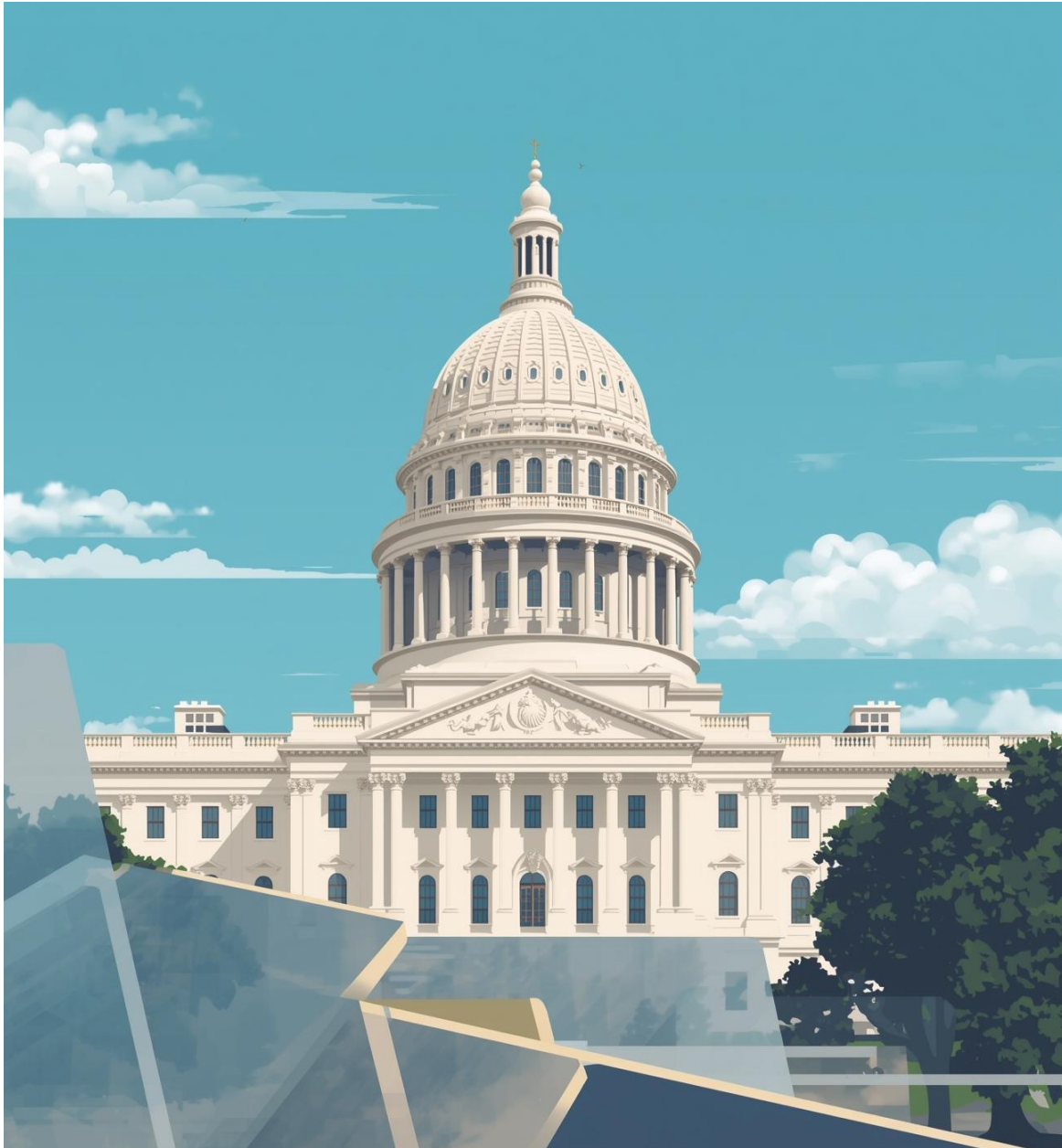
Present your registration card if you have one.



Know Rights

Familiarize yourself with your voting rights today.





Kansas Election Resources

Visit the **Kansas Secretary of State** website for comprehensive information regarding voter registration, polling locations, and upcoming elections. For additional resources, scan the QR Code provided to access valuable tips and tools to ensure your voting experience is smooth and informed.



Get Involved

CONTACT FOR MORE INFORMATION

Council of American Islamic Relations
www.cairaction.org

American Muslim Coalition of Kansas City
www.amckc.org

